**BASI A BLOCCHI MODULARI****TIPO BH-3xxx****Caratteristiche generali:**

- Tipo prodotto: basi portafusibili a blocchi omologate UL/CSA;
- Corpo in materiale termoplastico;
- Zoccoli in acciaio;
- Corrente nominale: fino a 700A;
- Tensione nominale: fino a 1250V AC;
- Confezione minima: 1 pezzo;

MODULAR FUSEBLOCKS**SERIE BH-3xxx****General characteristics:**

- *Product type: UL/CSA approved modular fuseblocks;*
- *Body made in thermoplastic material;*
- *Mounting studs made in steel;*
- *Rated current: up to 700A;*
- *Rated voltage: up to 1250V AC;*
- *Minimum packaging: 1 piece;*

Foto del prodotto / Product image

Pagine totali del documento: 5

Document total pages: 5

Ultimo aggiornamento: 4 febbraio 2016

Last update: 4th February 2016



Codici per l'ordinazione:

Ordering codes:

codice code	Tipo type	poli poles	conf. pack.
1810414	BH-3144	1	1 (set 2 pz)
1745034	BH-3145	1	1 (set 2 pz)

Altre caratteristiche

- Produttore: Bussmann;
- Approvazione UL: IZLT2.E14853;
(fino a 700V)
- Approvazione CSA: 47235 / 6225.01;
(fino a 700V)

Other characteristics

Manufacturer: Bussmann;
UL approval: IZLT2.E14853;
(up to 700V)
CSA approval: 47235 / 6225.01;
(up to 700V)

Catalog Code Description:

Block Series

BH - 3 X X X

Agency Information

- 0 No Agency Information
- 1 U.L. Recognition and CSA Certification
- 2 U.L. Recognition Only
- 3 CSA Certification Only

Wire Connector

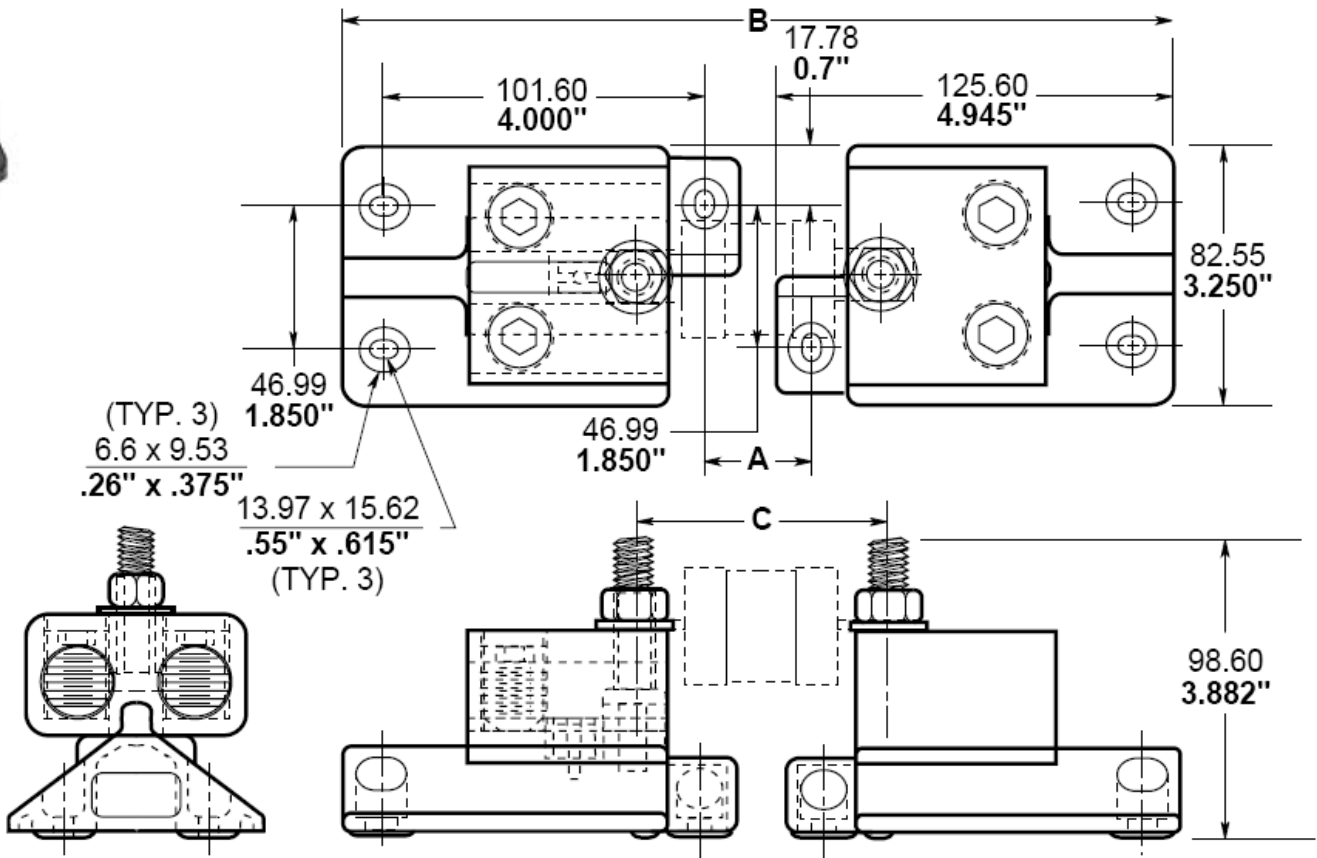
- 0 No Connector
- 3 2 Hole for #6 - 250MCM Copper Wire
(for use with Bases 1, 2, & 3)
- 4 2 Hole for #4 - 500MCM Copper Wire
(for use with Base 3) - See Note 1 below

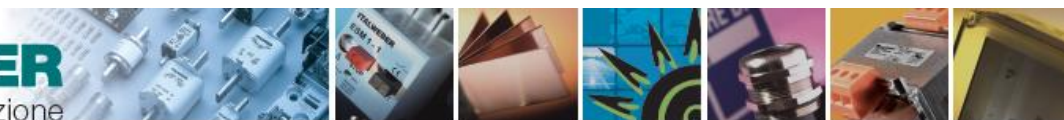
Stud Size

- 3/8 - 16L
- 4 7/16 - 14L
- 5/8 - 16L



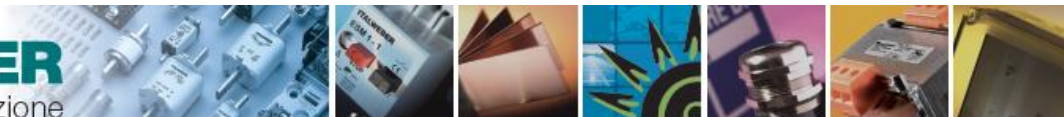
Dimensional Data $\frac{\text{mm} (\pm .25)}{\text{Inches} (\pm .01)}$





BASI UTILIZZABILI CON I SEGUENTI FUSIBILI - FUSEBLOCKS USABLE WITH FUSES

Buss Cat. No.	Fuseblock Part No.	Stud Ref.	Fuse Volt Rating	Dimensions mm / Inches		
				"A"	"B"	"C"
FBP 250-400	BH-3144	7/16	700V	59.46 / 2.341	288.06 / 11.341	102.39 / 4.031
FBP 450-600	BH-3144	7/16	700V	65.02 / 2.56	293.62 / 11.56	107.95 / 4.25
FWA 450-600	BH-3145	3/8	150V	20.57 / 0.81	249.1 / 79.81	63.50 / 2.50
FWH 450A-600A	BH-3145	3/8	500V	46.74 / 1.84	275.34 / 10.84	89.68 / 3.53
FWP 450A-600A	BH-3144	7/16	700V	102.36 / 4.03	330.96 / 13.03	145.29 / 5.72
FWX 350A-600A	BH-3145	3/8	250V	31.75 / 1.25	260.35 / 10.25	74.68 / 2.94
JJN 450-600	BH-3144	7/16	300V	8.66 / 0.341	237.26 / 9.341	51.59 / 2.031
JJS 450-600	BH-3144	7/16	600V	32.08 / 1.263	260.68 / 10.263	75.01 / 2.953
JKS 225-400	BH-3145	3/8	600V	90.42 / 3.56	319.02 / 12.56	133.35 / 5.25
JKS 450-600	BH-3144	7/16	600V	109.47 / 4.31	338.07 / 13.31	152.40 / 6.00
KAA 450-600	BH-3145	3/8	130V	18.97 / 0.747	247.57 / 9.747	61.90 / 2.437
KAB 450-600	BH-3145	3/8	250V	27.71 / 1.091	256.31 / 10.091	70.64 / 2.781
KAC 225-400	BH-3144	7/16	600V	77.72 / 3.06	306.32 / 12.06	120.65 / 4.75
KAC 425-600	BH-3144	7/16	600V	77.72 / 3.06	306.32 / 3.06	120.65 / 4.75
KAX 450-600	BH-3145	3/8	250V	27.71 / 1.091	256.31 / 10.091	70.64 / 2.781
KBC 450-600	BH-3145	3/8	600V	60.33 / 2.372	288.85 / 11.372	103.17 / 4.062
KBP 450-600	BH-3144	7/16	700V	86.44 / 3.403	315.04 / 12.403	129.36 / 5.093
LPJ 225-400	BH-3145	3/8	600V	90.42 / 3.56	319.02 / 12.56	133.35 / 5.25
LPJ 450-600	BH-3144	7/16	600V	109.47 / 4.31	338.07 / 13.31	152.40 / 6.00
SPJ-5B 200-400	BH-3144	7/16	1000V	82.83 / 3.261	262.15 / 10.321	127.79 / 5.031
SPJ-5E 200-400	BH-3144	7/16	1000V	82.83 / 3.261	262.15 / 10.321	127.79 / 5.031
SPJ-6B 300-600	BH-3144	7/16	1000V	84.86 / 3.341	313.46 / 12.341	127.79 / 5.031
SPJ-6E 300-600	BH-3144	7/16	1000V	84.86 / 3.341	313.46 / 12.341	127.79 / 5.031
SPP-5B 225-600	BH-3144	7/16	700V	61.04 / 2.403	289.64 / 11.403	103.96 / 4.093
SPP-5E 225-600	BH-3144	7/16	700V	61.04 / 2.403	289.64 / 11.403	103.96 / 4.093
SPP-5F 225-600	BH-3144	7/16	700V	82.47 / 3.247	311.07 / 12.247	125.40 / 4.937
SPP-5H 225-600	BH-3144	7/16	700V	82.47 / 3.247	311.07 / 12.247	125.40 / 4.937
SPP-6B 300-600	BH-3144	7/16	700V	61.04 / 2.403	289.64 / 11.403	103.96 / 4.093
SPP-6E 300-600	BH-3144	7/16	700V	61.04 / 2.403	289.64 / 11.403	103.96 / 4.093
SPP-6F 300-600	BH-3144	7/16	700V	82.47 / 3.247	311.07 / 12.247	125.40 / 4.937
SPP-6H 300-600	BH-3144	7/16	700V	82.47 / 3.247	311.07 / 12.247	125.40 / 4.937
SPP-7B 450-600	BH-3144	7/16	700V	62.64 / 2.466	291.24 / 11.466	105.56 / 4.156
SPP-7E 450-600	BH-3144	7/16	700V	62.64 / 2.466	291.24 / 11.466	105.56 / 4.156
SPP-7F 450-600	BH-3144	7/16	700V	81.69 / 3.216	310.29 / 12.216	124.61 / 4.906
SPP-7H 450-600	BH-3144	7/16	700V	81.69 / 3.216	310.29 / 12.216	124.61 / 4.906
170L4702 thru 170L4720	BH-3145	3/8	1000V	67.06 / 2.64	295.66 / 11.642	109.98 / 4.33
170L5195 thru 170L5299	BH-3145	3/8	1000V	65.07 / 2.562	293.67 / 11.562	108.00 / 4.252
170L7295 thru 170L7296	BH-3145	3/8	1000V	65.07 / 2.562	293.67 / 11.562	108.00 / 4.252
170L7635 thru 170L7636	BH-3145	3/8	1000V	65.07 / 2.562	293.67 / 11.562	108.00 / 4.252
170L7697 thru 170L7699	BH-3145	3/8	1000V	65.07 / 2.562	293.67 / 11.562	108.00 / 4.252
170L8124 thru 170L8379	BH-3145	3/8	1000V	65.07 / 2.562	293.67 / 11.562	108.00 / 4.252
170L8423 thru 170L8429	BH-3145	3/8	1000V	65.07 / 2.562	293.67 / 11.562	108.00 / 4.252
170L8684 thru 170L8982	BH-3144	7/16	1000V	72.06 / 2.837	300.66 / 11.837	114.99 / 4.527
170L9300 thru 170L9302	BH-3144	7/16	1000V	72.06 / 2.837	300.66 / 11.837	114.99 / 4.527
170L9306 thru 170L9308	BH-3144	7/16	1000V	72.06 / 2.837	300.66 / 11.837	114.99 / 4.527
170M3020 thru 170M3023	BH-3145	3/8	660V	35.05 / 1.38	263.65 / 10.38	77.98 / 3.07
170M3070 thru 170M3073	BH-3145	3/8	660V	35.05 / 1.38	263.65 / 10.38	77.98 / 3.07
170M3120 thru 170M3123	BH-3145	3/8	660V	35.05 / 1.38	263.65 / 10.38	77.98 / 3.07
170M3170 thru 170M3173	BH-3145	3/8	660V	65.07 / 2.562	293.67 / 11.562	108.00 / 4.252
170M3220 thru 170M3223	BH-3145	3/8	660V	65.07 / 2.562	293.67 / 11.562	108.00 / 4.252
170M3270 thru 170M3273	BH-3145	3/8	660V	65.07 / 2.562	293.67 / 11.562	108.00 / 4.252
170M3320 thru 170M3323	BH-3144	7/16	660V	33.07 / 1.302	261.67 / 10.302	76.00 / 2.992
170M3370 thru 170M3373	BH-3144	7/16	660V	33.07 / 1.302	261.67 / 10.302	76.00 / 2.992



BASI UTILIZZABILI CON I SEGUENTI FUSIBILI - FUSEBLOCKS USABLE WITH FUSES

Buss Cat. No.	Fuseblock Part No.	Stud Ref.	Fuse Volt Rating	Dimensions mm / Inches		
				"A"	"B"	"C"
170M3620 thru 170M3623	BH-3145	3/8	660V	42.06 / 1.656	270.66 / 10.656	84.99 / 3.346
170M3670 thru 170M3673	BH-3145	3/8	660V	42.06 / 1.656	270.66 / 10.656	84.99 / 3.346
170M3720 thru 170M3723	BH-3145	3/8	660V	80.06 / 3.152	308.66 / 12.152	122.99 / 4.842
170M3770 thru 170M3773	BH-3145	3/8	660V	80.06 / 3.152	308.66 / 12.152	122.99 / 4.842
170M4008 thru 170M4017	BH-3145	3/8	660V	35.05 / 1.38	263.65 / 10.38	77.98 / 3.07
170M4058 thru 170M4067	BH-3145	3/8	660V	35.05 / 1.38	263.65 / 10.38	77.98 / 3.07
170M4108 thru 170M4117	BH-3145	3/8	660V	35.05 / 1.38	263.65 / 10.38	77.98 / 3.07
170M4138 thru 170M4247	BH-3145	3/8	1250V	65.07 / 2.562	293.67 / 11.562	108.00 / 4.252
170M4158 thru 170M4166	BH-3145	3/8	660V	65.07 / 2.562	293.67 / 11.562	108.00 / 4.252
170M4167 thru 170M4208	BH-3145	3/8	660V	65.07 / 2.562	293.67 / 11.562	108.00 / 4.252
170M4217 thru 170M4247	BH-3145	3/8	660V	65.07 / 2.562	293.67 / 11.562	108.00 / 4.252
170M4258 thru 170M4267	BH-3145	3/8	660V	65.07 / 2.562	293.67 / 11.562	108.00 / 4.252
170M4308 thru 170M4317	BH-3145	3/8	660V	43.08 / 1.696	271.68 / 10.696	86.00 / 3.386
170M4358 thru 170M4367	BH-3145	3/8	660V	43.08 / 1.696	271.68 / 10.696	86.00 / 3.386
170M4608 thru 170M4617	BH-3144	7/16	660V	61.06 / 2.404	289.66 / 11.404	103.99 / 4.094
170M4658 thru 170M4667	BH-3144	7/16	660V	61.06 / 2.404	289.66 / 11.404	103.99 / 4.09
170M4688 thru 170M4697	BH-3144	7/16	1250V	84.07 / 3.31	312.67 / 12.31	127.00 / 5.00
170M4708 thru 170M4717	BH-3144	7/16	660V	83.06 / 3.27	311.66 / 12.27	125.98 / 4.96
170M4738 thru 170M4747	BH-3144	7/16	1250V	84.07 / 3.31	312.67 / 12.31	127.00 / 5.00
170M4758 thru 170M4767	BH-3144	3/8	660V	83.06 / 3.27	311.66 / 12.27	125.98 / 4.96
170M5008 thru 170M5013	BH-3145	3/8	660V	35.05 / 1.38	263.65 / 10.38	77.98 / 3.07
170M5058 thru 170M5063	BH-3145	3/8	660V	35.05 / 1.38	263.65 / 10.38	77.98 / 3.07
170M5108 thru 170M5113	BH-3145	3/8	660V	35.05 / 1.38	263.65 / 10.38	77.98 / 3.07
170M5138 thru 170M5147	BH-3145	3/8	1250V	65.07 / 0.562	293.67 / 11.562	108.00 / 4.252
170M5158 thru 170M5163	BH-3145	3/8	660V	65.07 / 0.562	293.67 / 11.562	108.00 / 4.252
170M5188 thru 170M5197	BH-3145	3/8	1250V	65.07 / 0.562	293.67 / 11.562	108.00 / 4.252
170M5208 thru 170M5213	BH-3145	3/8	660V	65.07 / 0.562	293.67 / 11.562	108.00 / 4.252
170M5238 thru 170M5247	BH-3145	3/8	1250V	65.07 / 0.562	293.67 / 11.562	108.00 / 4.252
170M5258 thru 170M5263	BH-3145	3/8	660V	65.07 / 0.562	293.67 / 11.562	108.00 / 4.252
170M5308 thru 170M5313	BH-3145	3/8	660V	48.08 / 1.893	276.68 / 10.893	91.01 / 3.583
170M5358 thru 170M5363	BH-3145	3/8	660V	48.08 / 1.893	276.68 / 10.893	91.01 / 3.583
170M5608 thru 170M5613	BH-3144	7/16	660V	62.08 / 2.444	290.68 / 11.444	105.00 / 4.134
170M5658 thru 170M5663	BH-3144	7/16	660V	62.08 / 2.444	290.68 / 11.444	105.00 / 4.134
170M5688 thru 170M5696	BH-3144	7/16	1250V	84.07 / 3.31	312.67 / 12.31	127.00 / 5.00
170M5708 thru 170M5713	BH-3144	7/16	660V	82.07 / 3.231	310.67 / 12.231	124.99 / 4.921
170M5738 thru 170M5746	BH-3144	7/16	1250V	84.07 / 3.31	312.67 / 12.31	127.00 / 5.00
170M5758 thru 170M5763	BH-3144	7/16	660V	82.07 / 3.231	310.67 / 12.231	124.99 / 4.921
170M6008 thru 170M6011	BH-3145	3/8	660V	35.05 / 1.38	263.65 / 10.38	77.98 / 3.07
170M6058 thru 170M6061	BH-3145	3/8	660V	35.05 / 1.38	263.65 / 10.38	77.98 / 3.07
170M6108 thru 170M6111	BH-3145	3/8	660V	35.05 / 1.38	263.65 / 10.38	77.98 / 3.07
170M6138 thru 170M6145	BH-3145	3/8	1250V	65.07 / 2.562	293.67 / 11.562	108.00 / 4.252
170M6158 thru 170M6161	BH-3145	3/8	660V	65.07 / 2.562	293.67 / 11.562	108.00 / 4.252
170M6188 thru 170M6195	BH-3145	3/8	1250V	65.07 / 2.562	293.67 / 11.562	108.00 / 4.252
170M6208 thru 170M6211	BH-3145	3/8	660V	65.07 / 2.562	293.67 / 11.562	108.00 / 4.252
170M6238 thru 170M6245	BH-3145	3/8	1250V	65.07 / 2.562	293.67 / 11.562	108.00 / 4.252
170M6258 thru 170M6261	BH-3145	3/8	660V	65.07 / 2.562	293.67 / 11.562	108.00 / 4.252
170M6308 thru 170M6311	BH-3144	7/16	660V	48.08 / 1.893	276.68 / 10.893	91.01 / 3.583
170M6358 thru 170M6361	BH-3144	7/16	660V	48.08 / 1.893	276.68 / 10.893	91.01 / 3.583